



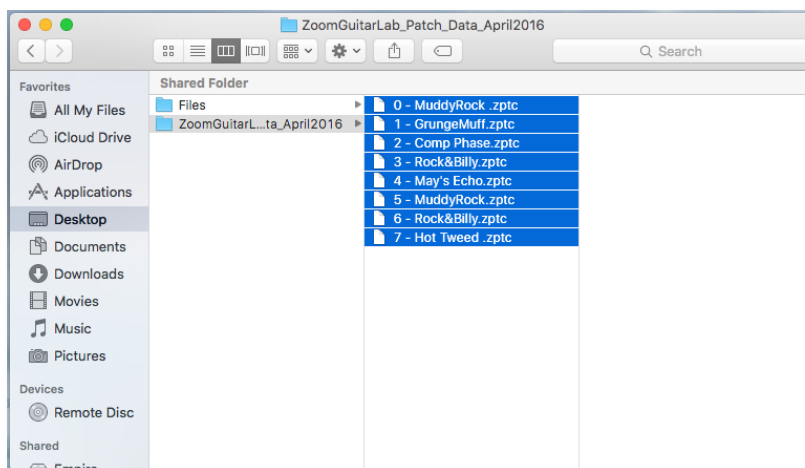
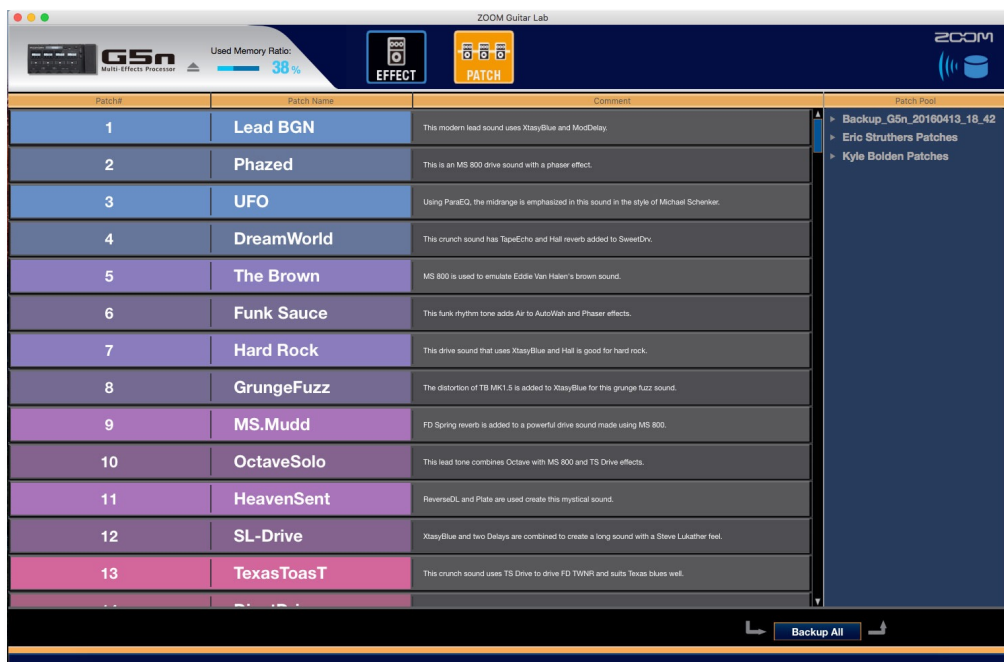
How to Add New Patches to your Pedal via Zoom Guitar Lab

NOTE:

For new patches to work completely, particularly those that utilize new sounds not contained in your pedal out of the box, you must have the latest Stompboxes, Amps, and Cabinets downloaded via Zoom Guitar Lab software. Simply open the Guitar Lab software on an internet-connected computer with either Mac OS X (10.9 ~ 10.11) or Windows (7, 8, 8.1, or 10)

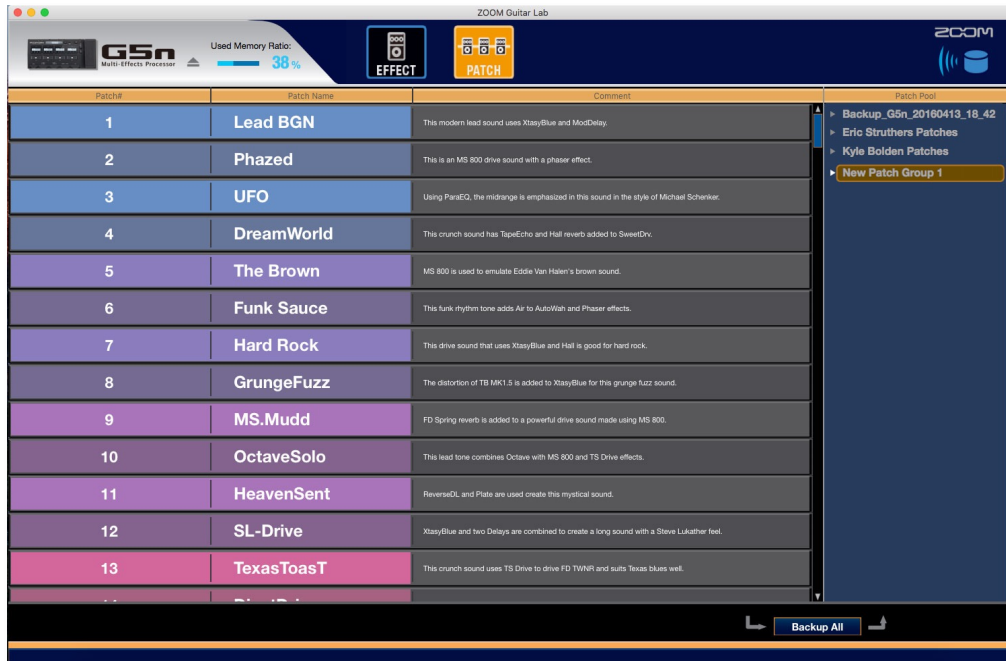
Instructions for Mac

1. Start Guitar Lab, then connect and power up your B3n. Click on “PATCH” to select the Patch Librarian.

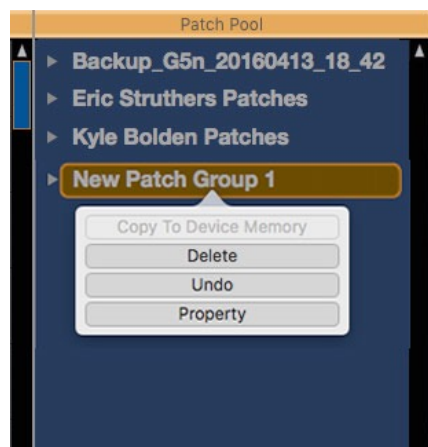


2. Extract the ZIP files downloaded from Zoom. Inside you will see “*.zptc” files. Drag .zptc files and drop onto right part of Patch Librarian window.

3. A new Patch folder will be created which includes the new patches.



4. The new Patch folder name can be edited if you like by clicking on the group while holding down CONTROL (or right-clicking with enabled mouse/trackpad) and selecting "Property".



5. You can either drag the patch folder and drop to the left part of the window to install all at once, or drag patches one-by-one to the desired Patch bay.

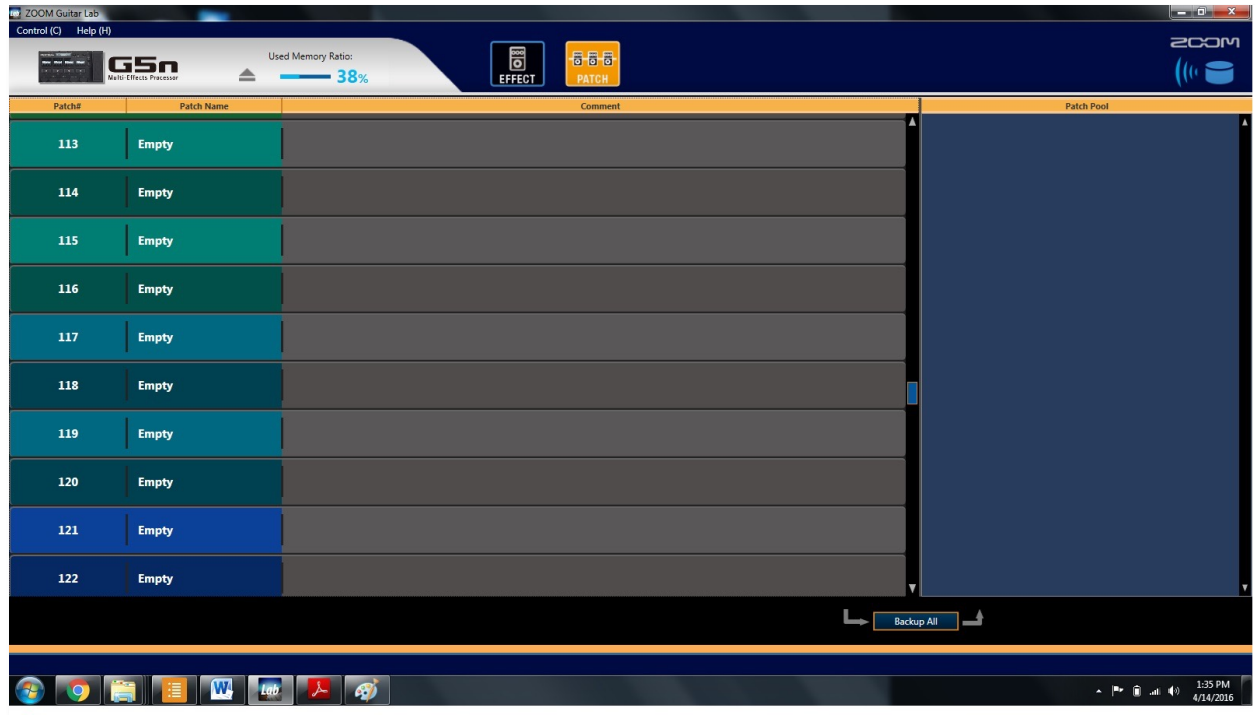
The screenshot shows the ZOOM Guitar Lab software interface. At the top, there's a header bar with the ZOOM logo, a 'G5n Multi-Effects Processor' icon, a 'Used Memory Ratio: 38%' indicator, and buttons for 'EFFECT' and 'PATCH'. Below the header is a table with three columns: 'Patch#', 'Patch Name', and 'Comment'. The table lists patches 188 through 200. Patches 188 and 189 are 'Empty'. Patches 190 through 197 have names and comments. Patch 197, 'Hot Tweed', is highlighted with an orange border. To the right of the table is a 'Patch Pool' panel with a tree view showing folders like 'Backup_G5n_20160413_18_42', 'Eric Struthers Patches', 'Kyle Bolden Patches', and 'April Patches 2016'. The 'April Patches 2016' folder is expanded, showing a list of patches: 'MuddyRock', 'GrungeMuff', 'Comp Phase', 'Rock&Billy', 'May's Echo', 'MuddyRock', 'Rock&Billy', and 'Hot Tweed'. At the bottom right of the interface is a 'Backup All' button.

Patch#	Patch Name	Comment
188	Empty	
189	Empty	
190	MuddyRock	This all-purpose crunch sound combines SweetDrive and FD B-MAN.
191	GrungeMuff	This 90's alternative rock sound features NYC Muff.
192	Comp Phase	GrayComp and Phaser are used for this sound for playing disco funk rhythm guitar.
193	Rock&Billy	This rockability sound combines EarlyRef and FD B-MAN.
194	May's Echo	Queen's Brighton Rock is the inspiration for this ping-pong delay sound.
195	MuddyRock	This all-purpose crunch sound that combines SweetDrive and FD B-MAN is good for recording.
196	Rock&Billy	This rockability sound that combines EarlyRef and FD B-MAN is good for recording.
197	Hot Tweed	Combining GoldDrive and FD B-MAN, this lead tone is good for recording.
198	Empty	
199	Empty	
200	Empty	

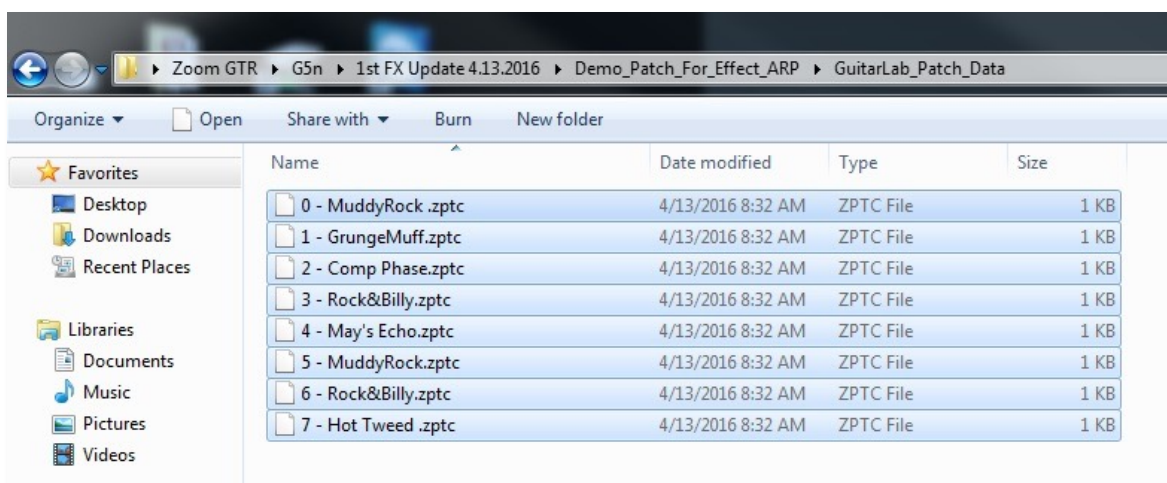
You will see the new patches and their comments in your Patch list. You can then check the new sounds by selecting the patch on the left, reorder, and edit the comments.

Instructions for Windows PC

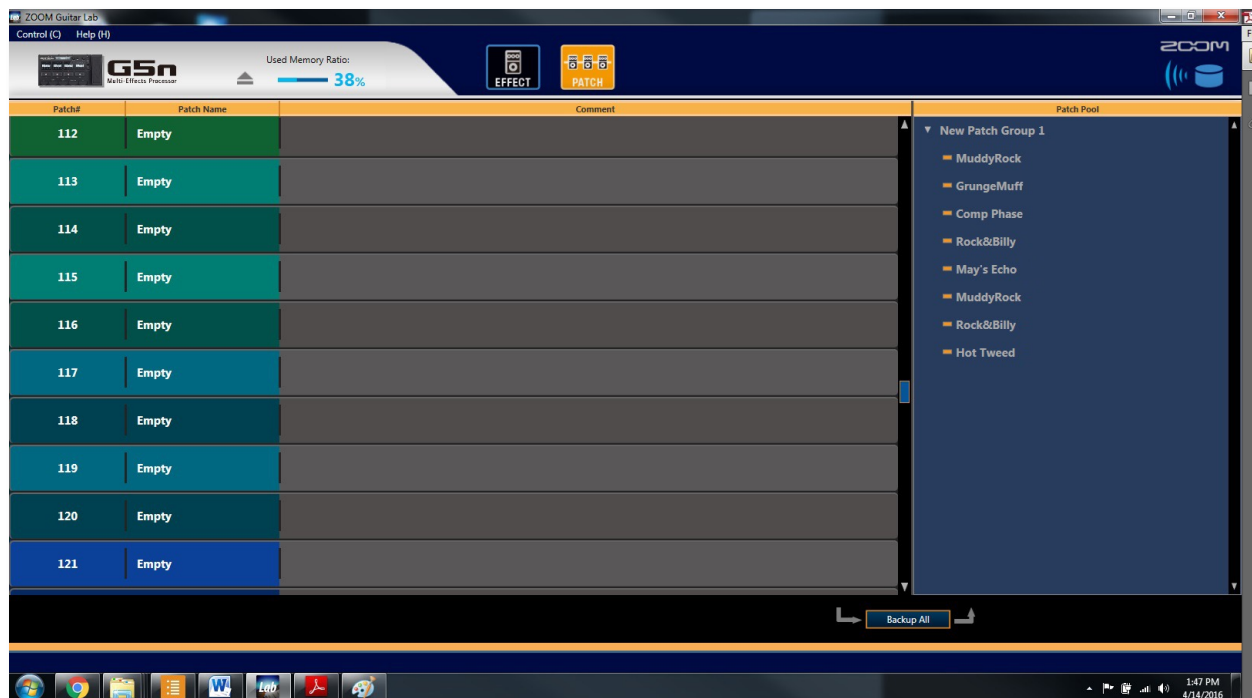
1. Start Guitar Lab, then connect and power up your B3n.
Click on “PATCH” to select the Patch Librarian.



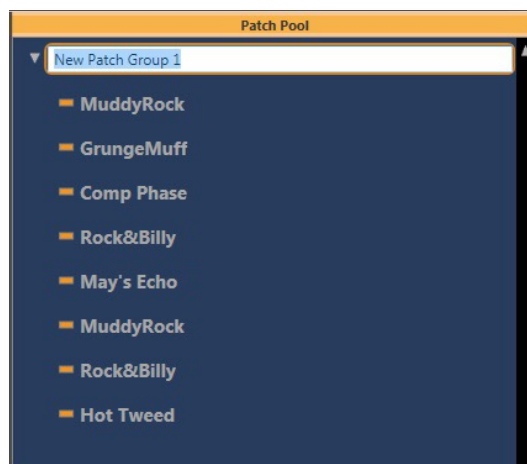
2. Extract the ZIP files downloaded from Zoom.
Inside you will see “*.zptc” files. Drag .zptc files and drop onto right part of Patch Librarian window.



3. A new Patch folder will be created which includes the new patches.



4. The new Patch folder name can be edited if you like by right-clicking on "Property".



5. You can either drag the patch folder and drop to the left part of the window to install all at once, or drag patches one-by-one to the desired Patch bay.

You will see the new patches and their comments in your Patch list. You can then check the new sounds by selecting the patch on the left, reorder, and edit the comments.