

MS-50G Effect Manager Users Guide (Windows)

Copyright(C) 2017 ZOOM Corporation. All Rights Reserved.

●Zoom Corporation does not bear liability for any damages or third-party claims arising from the use of the software, whether directly or indirectly. Unauthorized redistribution, sale, leasing, renting, alteration, or reverse engineering of the software is prohibited. Features and specifications of the software and the contents of the documentation may be changed in future without notice.

Windows® is a registered trademark of Microsoft® Corporation.
Note: Other Product names, registered trademarks and company names in this document are the property of their respective companies.
Note: All trademarks and registered trademarks in this document are for identification purposes only and are not intended to infringe on the copyrights of their respective owners.

The illustrations in these instructions might differ from actual screens.

Contents

1. Introduction	2
2. System Requirements	2
Precautions	2
3. Installing the standard Windows driver on the computer	3
4. Loading effects	4

1. Introduction

Thank you very much for downloading the MS-50G Effect Manager. This document explains how to load (write) effects to the MS-50G.

2. System Requirements

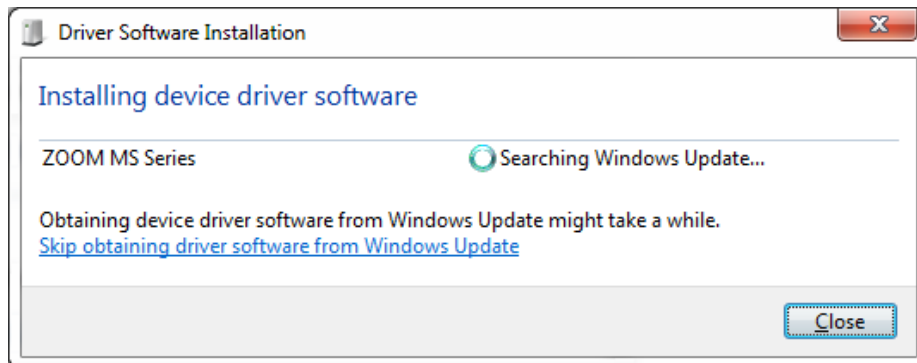
OS : Windows® 7 SP1 or later (32-bit/64-bit)
Windows® 8.1 (32-bit/64-bit)
Windows® 10.1 (32-bit/64-bit)

Precautions

- 1) **Log in to your computer using an account with administrator privileges.**
- 2) **Before starting this application, shut down all other applications that are running.**

3. Installing the standard Windows driver on the computer

Connect the MS-50G to the computer using a USB cable. If you connect to a USB port that is different from the one that you used when installing the Windows standard driver previously, "Driver Software Installation" will appear.



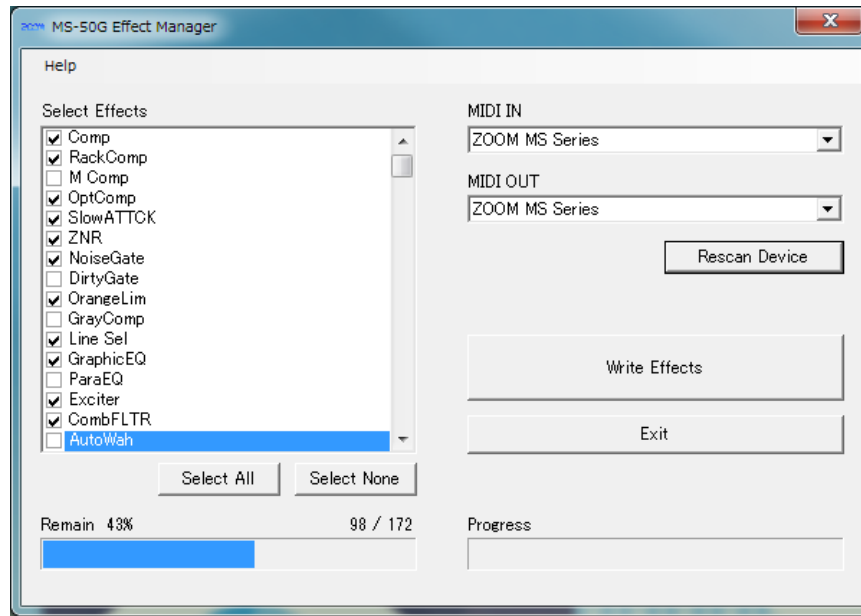
After a short time, the standard driver installation will complete.

4. Loading effects

4.1. Connect the MS-50G and the computer using a USB cable.

4.2. Double-click the MS-50G Effect Manager icon to launch it.

After launching, a window that looks like this appears.



4.3. Confirm that "ZOOM MS Series" is shown in both the **MIDI IN** and **MIDI OUT** fields.

If nothing appears in these fields, click the **[Rescan Device]** button.

4.4. The **Select Effects** column shows a list of effects.

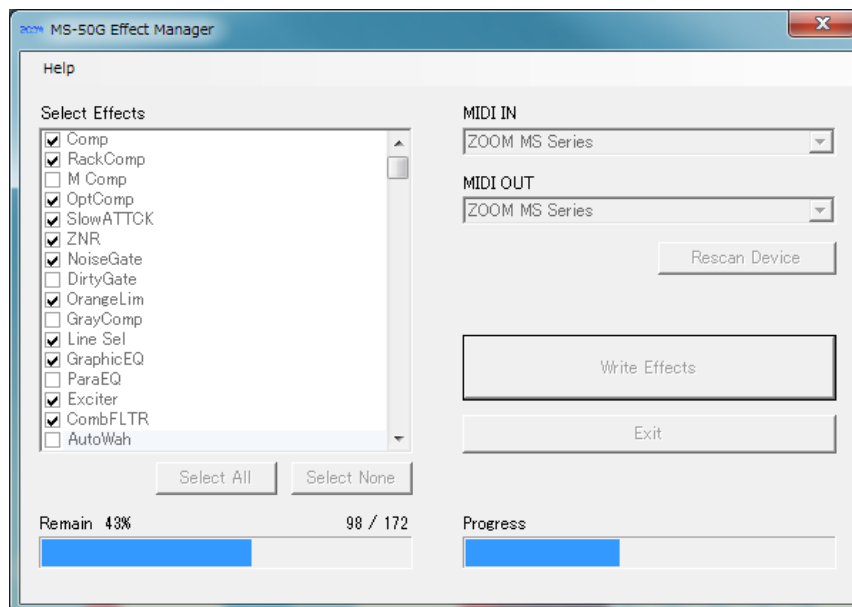
Click items in this column to change their selection status.

The checked items will be loaded.

- Click the **[Select All]** button to check all items in the **Select Effects** column. Click the **[Select None]** button to uncheck all items in the **Select Effects** column.
- If the **Remain** bar appears red, the maximum capacity for loaded effects is being exceeded. Select fewer effects so that they do not exceed the capacity.

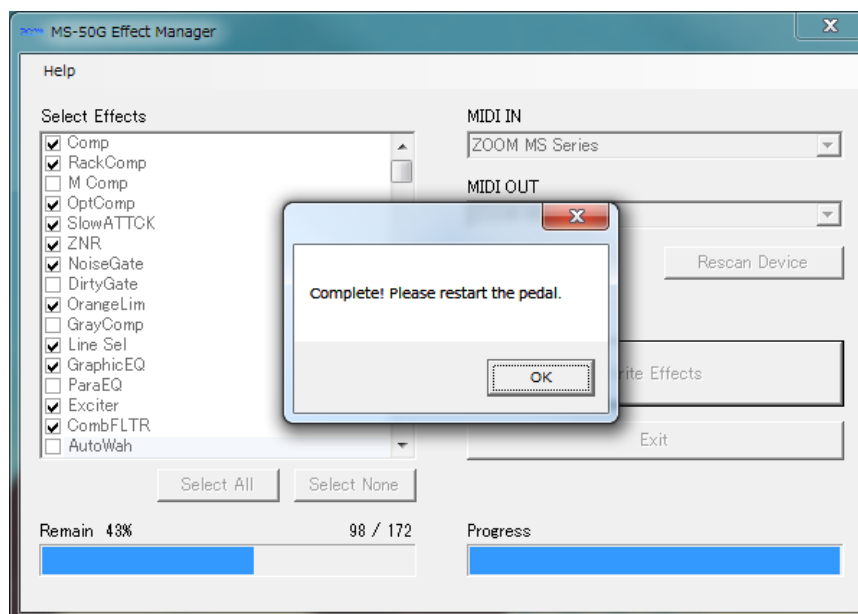
- 4.5. Click the **[Write Effects]** button to load (write) the selected effects.

While effects are being loaded, the progress is shown at the bottom right of the window as shown below.



Do not disconnect the USB cable while effects are being loaded.

- 4.6. When loading effects completes, the following will appear.



Click the **[OK]** button and **[Exit]** button to close the MS-50G Effect Manager. Then, turn the MS-50G power off.

- 4.7. Restart the MS-50G power, and confirm that you can select the effects that were loaded on it.

This completes effect loading.

©2017 ZOOM CORPORATION Z2I-2921-01