

ZOOM New G Series ASIO Driver Installation Guide

For Windows

Copyright(C) 2016 ZOOM Corporation. All Rights Reserved.

- Zoom Corporation does not bear liability for any damages or third-party claims arising from the use of the software, whether directly or indirectly. Unauthorized redistribution, sale, leasing, renting, alteration, or reverse engineering of the software is prohibited. Features and specifications of the software and the contents of the documentation may be changed in future without notice.

Windows® is a registered trademark of Microsoft® Corporation.

Note: Other product names, registered trademarks and company names in this document are the property of their respective companies.

Note: All trademarks and registered trademarks in this document are for identification purposes only and are not intended to infringe on the copyrights of their respective owners.

The actual content of screens and messages on the computer may differ from the illustrations used in this manual.

1. Introduction

Thank you for downloading the ZOOM New G Series ASIO Driver.

This document describes how to install and uninstall the driver.

2. Operation Environment Requirements

Operating system:

Windows® 7(32bit, 64bit)

Windows® 8(32bit, 64bit)

Windows® 8.1(32bit, 64bit)

Windows®10(32bit, 64bit)

CAUTION Start installation and uninstallation disconnecting New G Series from PC.

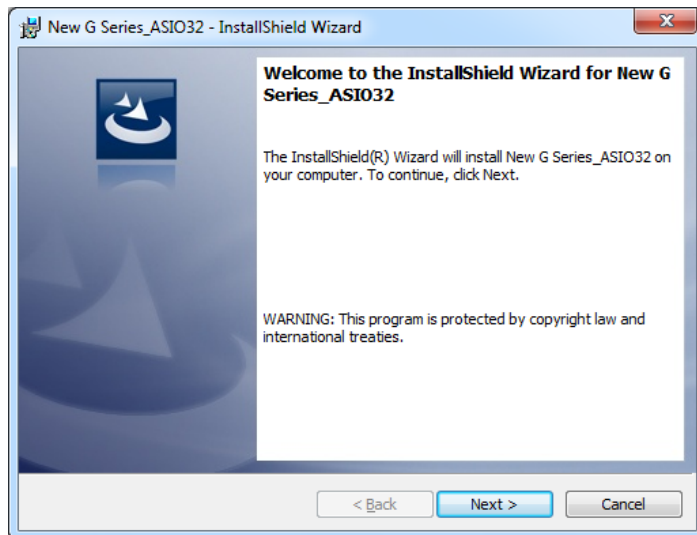
Before starting this application, shut down all other applications that are running.

3. Updating the driver

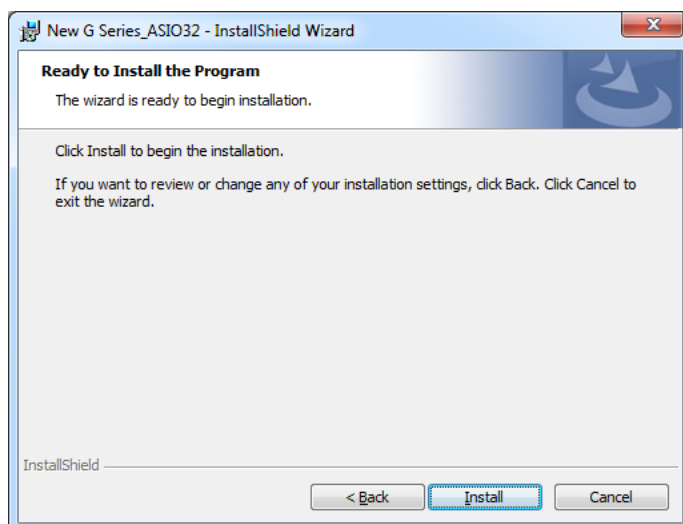
If a ZOOM New G Series Driver is already installed, first uninstall the old driver. Then install the new driver.

3.1. Installation

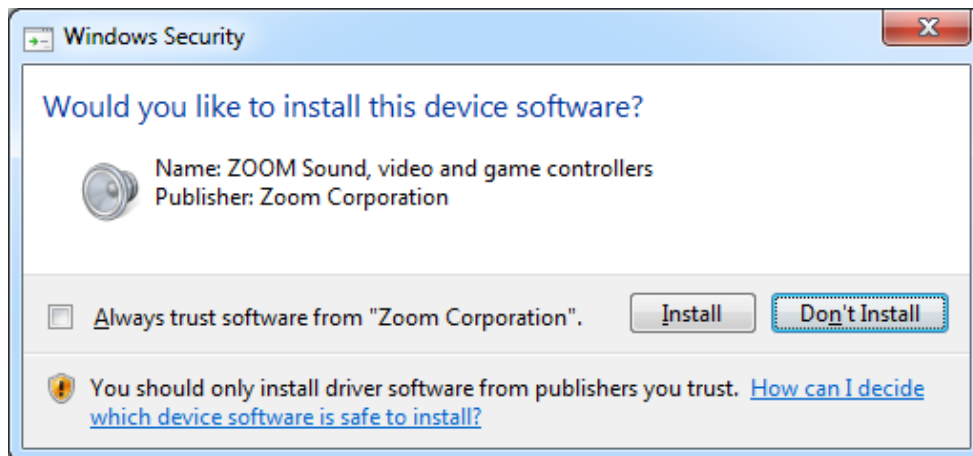
1. Start Windows without any USB devices including New G Series(Except keyboard and mouse).
2. Shut down any applications that are running.
3. Double-click on the "New G Series_ASIO32.exe" icon or "New G Series_ASIO64.exe" icon depending on the operating system you use.
4. Select language and click [OK].
5. To start the installation, click [Next].



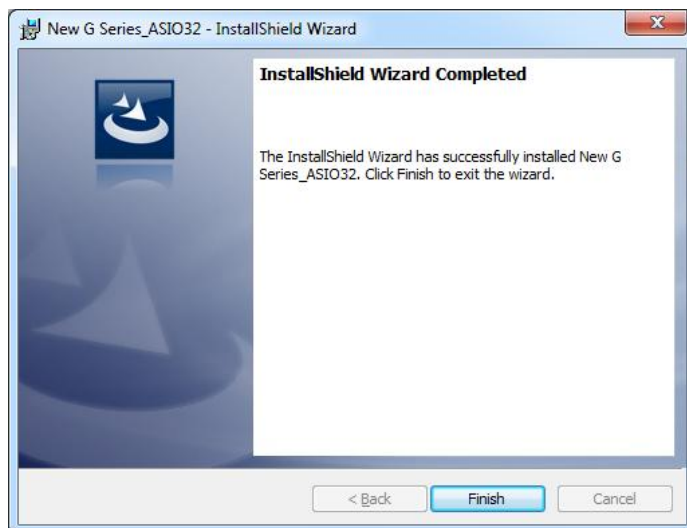
6. The License Agreement is displayed. Read the agreement and place a check mark in the "I accept the terms in the License Agreement" box to confirm your acceptance of the agreement. Then click [Next].
7. To start the installation, click [Install].



When a warning message “Windows security” appears, click [Install].

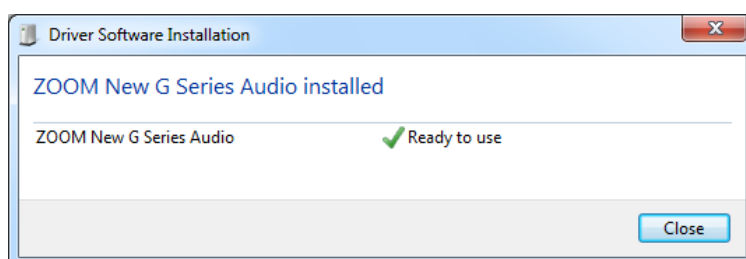
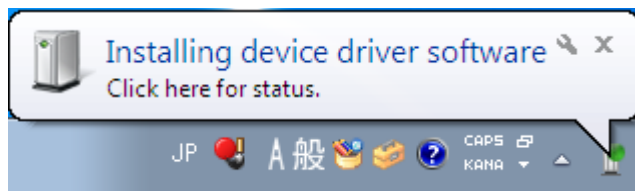


8. Click [Finish] to finish installation of InstallShield.



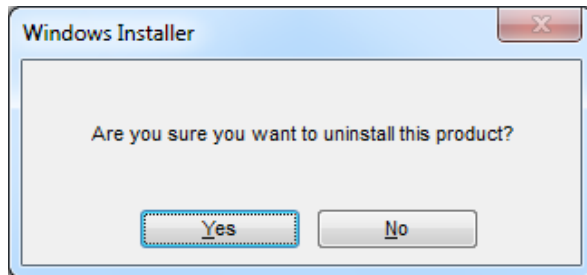
9. Next, connect the New G Series to the computer using a USB cable.

When New G Series is connected to Computer, “Installing device driver software” will launch and it finish automatically.



4. Uninstallation

1. Start Windows without any USB devices including New G Series (Except keyboard and mouse).
2. Shut down any applications that are running.
3. Click on the Start→Programs→ZOOM→New G Series→"Uninstall ZOOM New G Series Audio Driver" icon.
4. The uninstallation process starts. Confirm that you want to proceed by clicking [YES]. To cancel the process, click [NO].



*The uninstallation is completed automatically.