

ZOOM R16 R24 Driver Installation Guide (MAC)

Copyright(C) 2016 ZOOM Corporation. All Rights Reserved.

ver1.5.0

● Zoom Corporation does not bear liability for any damages or third-party claims arising from the use of the software, whether directly or indirectly. Unauthorized redistribution, sale, leasing, renting, alteration, or reverse engineering of the software is prohibited. Features and specifications of the software and the contents of the documentation may be changed in future without notice.

The actual content of screens and messages on the computer may differ from the illustrations used in this manual.

<Contents>

Introduction.....	3
Operation Environment Requirements	3
Precautions	3
Updating the driver	4
Installation	5
Uninstallation	9

Introduction

Thank you for downloading the ZOOM R16_R24 Driver.

This document describes how to install and uninstall the driver.

Operation Environment Requirements

Operating system: Macintosh OS X 10.9.5 or later

Intel® Core Duo processor 1.83GHz or better

1GB RAM or more

Precautions

- 1) Start installation and uninstallation disconnecting R16 or R24 from Macintosh.**
- 2) Before starting this application, shut down all other applications that are running.**

Updating the driver

Even if ZOOM R16 Driver or ZOOM R16_R24 Driver is already installed, new driver can be installed by following the procedure of installation.

Installation

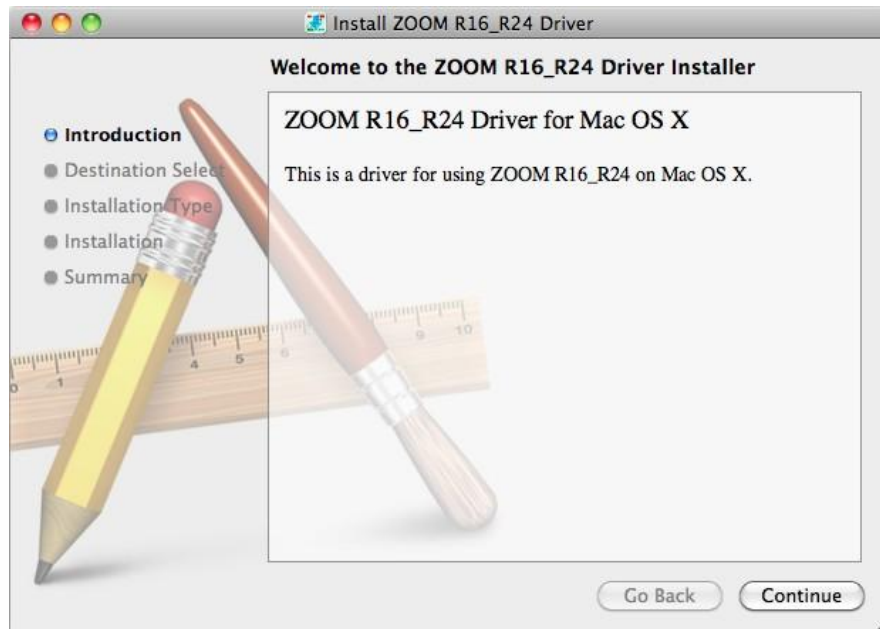
1. Start Macintosh without any USB devices including R16 or R24 (Except keyboard and mouse).
2. Shut down any applications that are running.
3. Double-click on the "ZOOM R16_R24Driver.pkg" icon.



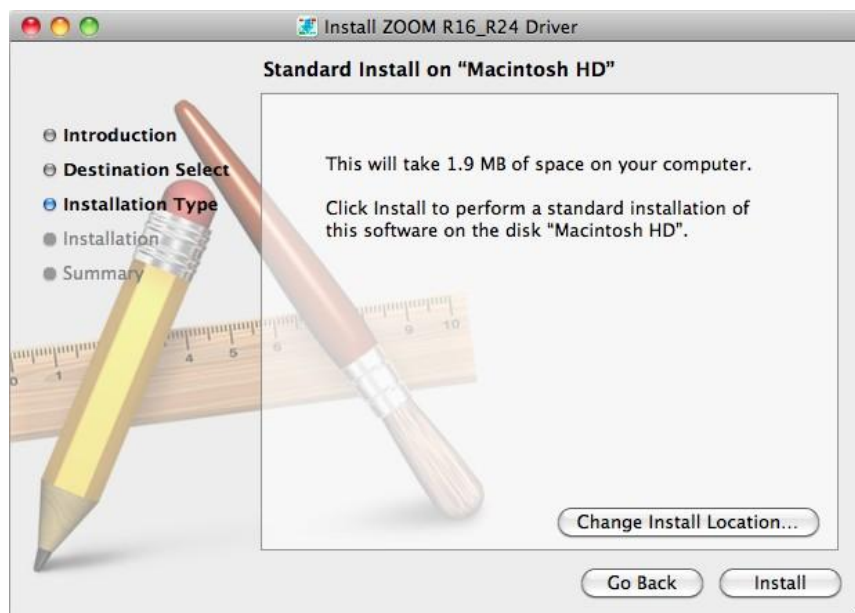
4. To start the installation, click [Continue].



5. Click [Continue].



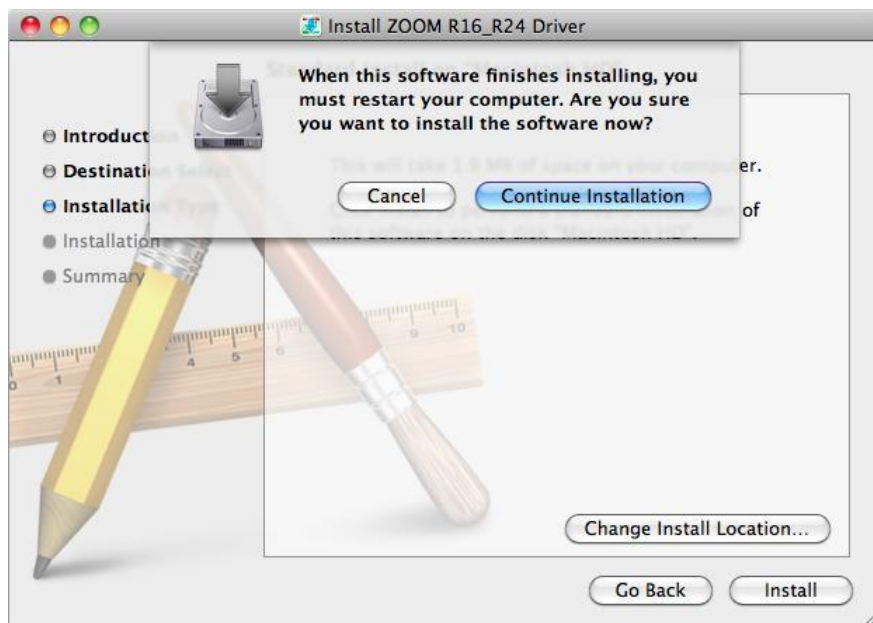
6. Click [Install].



7. Input password, if required.



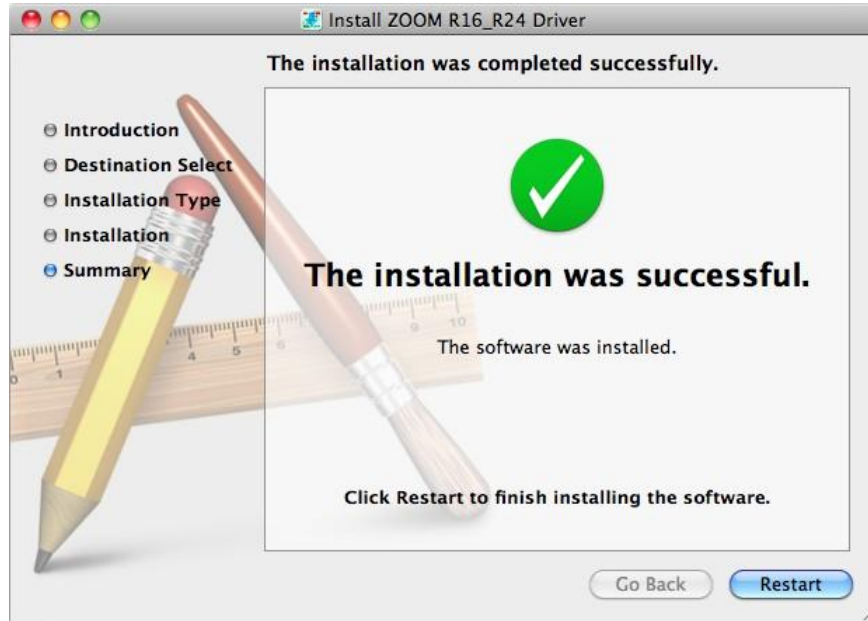
8. Click [Continue Installation].



Next, Progress bar will be displayed.

9. Installation complete

Driver installation is now complete. Click [Restart] to close the installer and reboot PC.

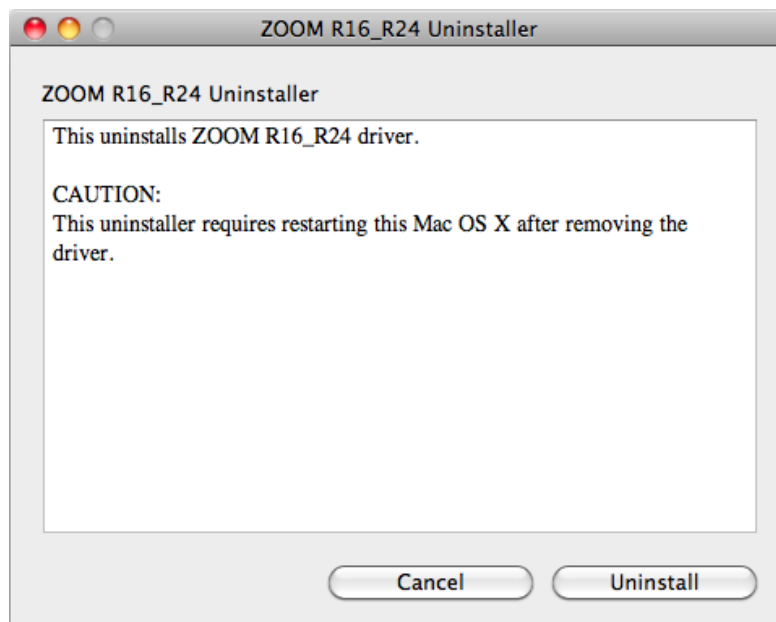


Uninstallation

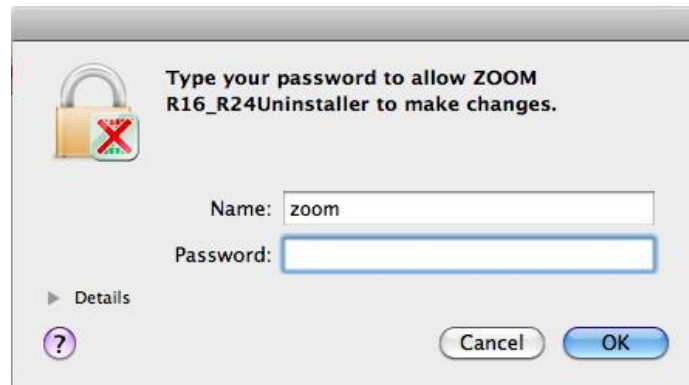
1. Start Macintosh without any USB devices including R16 or R24 (Except keyboard and mouse).
2. Shut down any applications that are running.
3. Double-click on the "ZOOM R16_R24Uninstaller" icon.



4. The uninstallation process starts. Confirm that you want to proceed by clicking [Uninstall]. To cancel the process, click [Cancel].



5. Input password, if required.



6. Uninstallation complete

Driver uninstallation is now complete. Click [Restart] to close the uninstaller and reboot PC.

