

ZOOM R16 R24 Driver Installation Guide (Windows)

Copyright(C) 2013 ZOOM Corporation. All Rights Reserved.

Ver2.0.0

● Zoom Corporation does not bear liability for any damages or third-party claims arising from the use of the software, whether directly or indirectly. Unauthorized redistribution, sale, leasing, renting, alteration, or reverse engineering of the software is prohibited. Features and specifications of the software and the contents of the documentation may be changed in future without notice.

The actual content of screens and messages on the computer may differ from the illustrations used in this manual.

<Contents>

Introduction.....	3
Operation Environment Requirements	3
Precautions	3
Updating the driver	4
Installation	5
Uninstallation	13

Introduction

Thank you for downloading the ZOOM R16_R24 Driver.

This document describes how to install and uninstall the driver.

Operation Environment Requirements

Operating system: Windows® XP SP2 later(32bit) / Windows® Vista SP1 later(32bit / 64bit) /
Windows® 7(32bit / 64bit) / Windows® 8(32bit / 64bit)

CPU: 32bit: Intel®Pentium®4 1.8GHz more
64bit: Intel® Pentium®Dual-Core 2.7GHz more

MEMORY: 32bit: RAM 1GB more
64bit: RAM 2GB more

Precautions

- 1) Start installation and uninstallation disconnecting R16 or R24 from PC.
- 2) Before starting this application, shut down all other applications that are running.

Updating the driver

If a ZOOM R16 Driver or a ZOOM R16_R24 Driver is already installed, first uninstall the old driver.

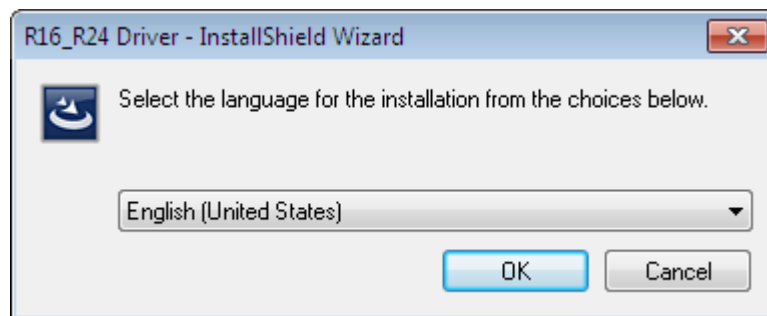
Then install the new driver.

Installation

1. Start Windows without any USB devices including R16 or R24 (Except keyboard and mouse).
2. Shut down any applications that are running.
3. Double-click on the "setup.exe" icon.



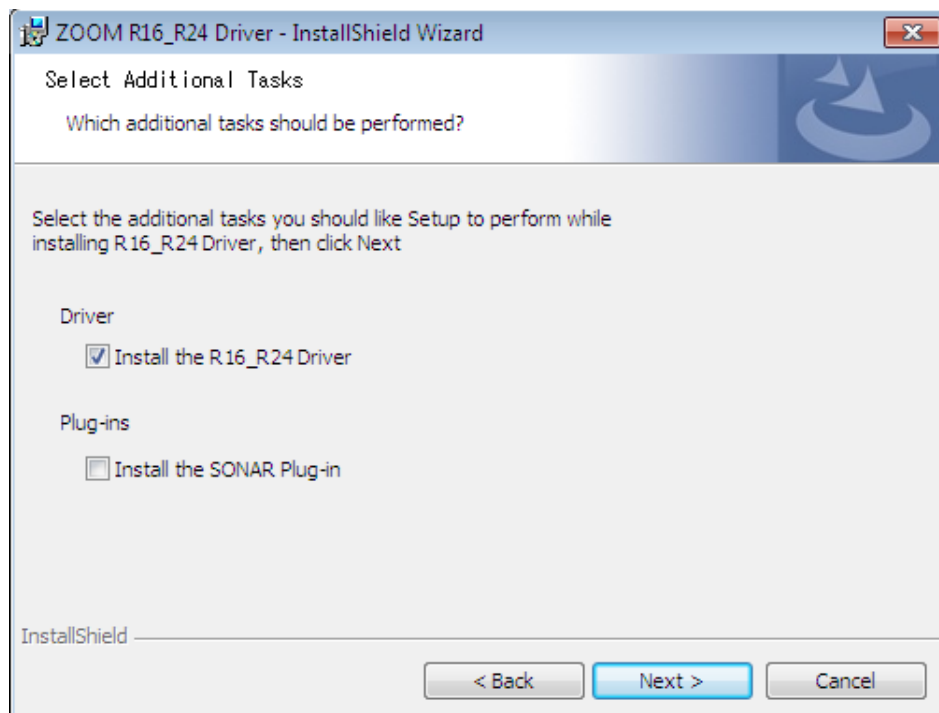
4. Select language and click [OK].



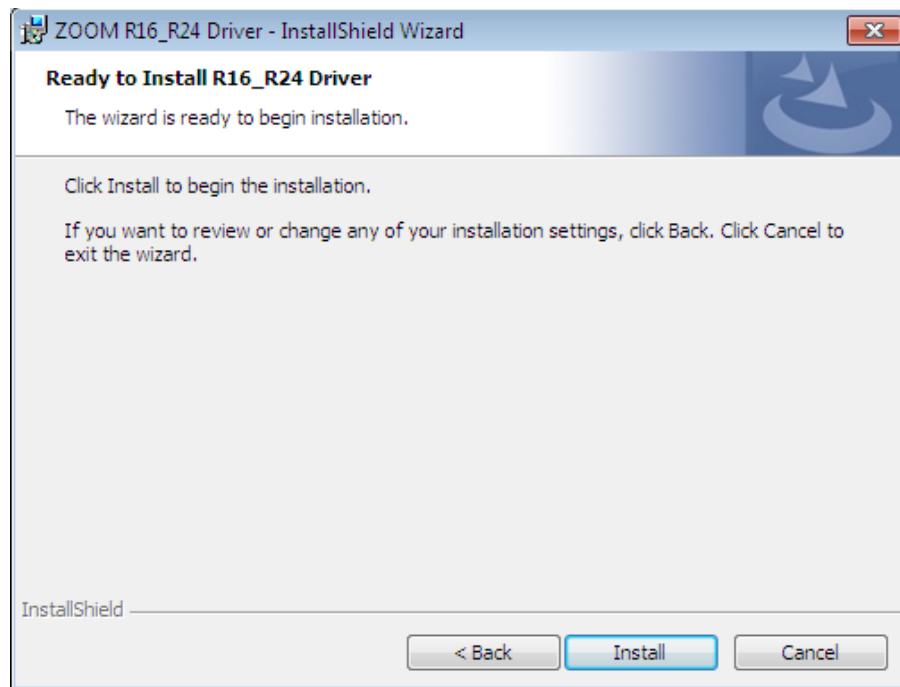
5. To start the installation, click [Next].



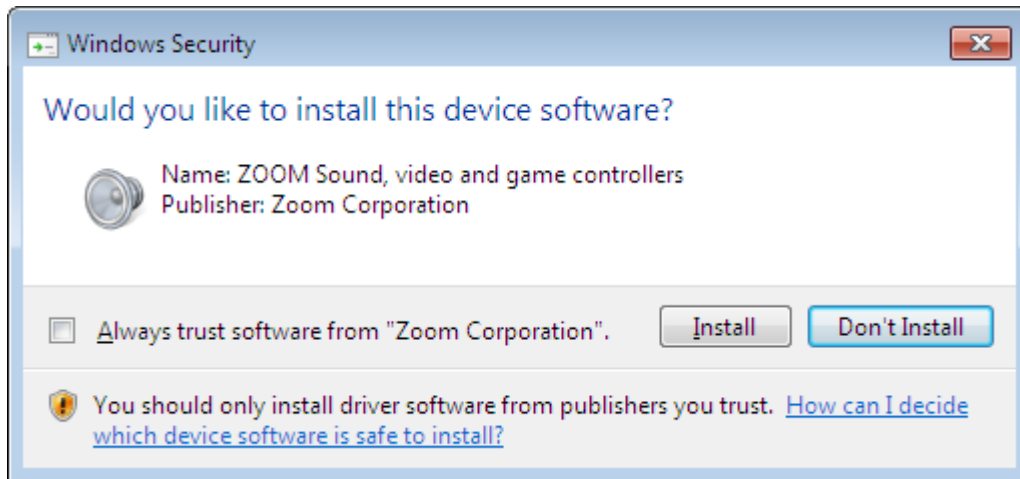
6. When you use SONAR, select “Install the SONAR Plug-In”.



7. To start the installation, click [Install].



When a warning message “Windows security” appears, click [Install].

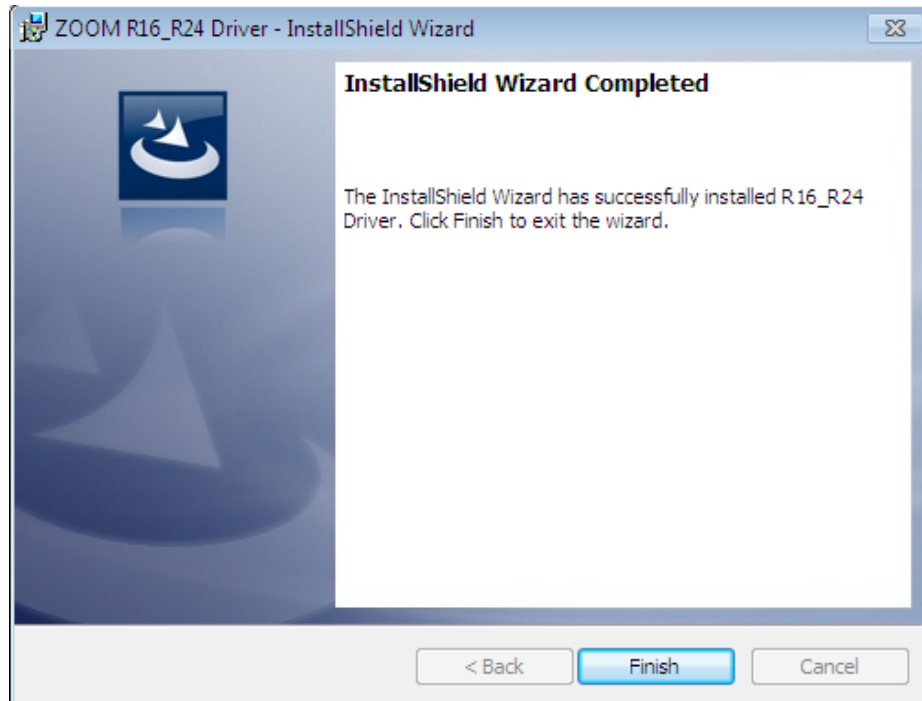


When a warning message “Software Installation” appears, click [Continue Anyway].



*A message “ZOOM R16_R24 Audio Driver (No Response)” may appear, but it is not a problem. Wait until it responds.

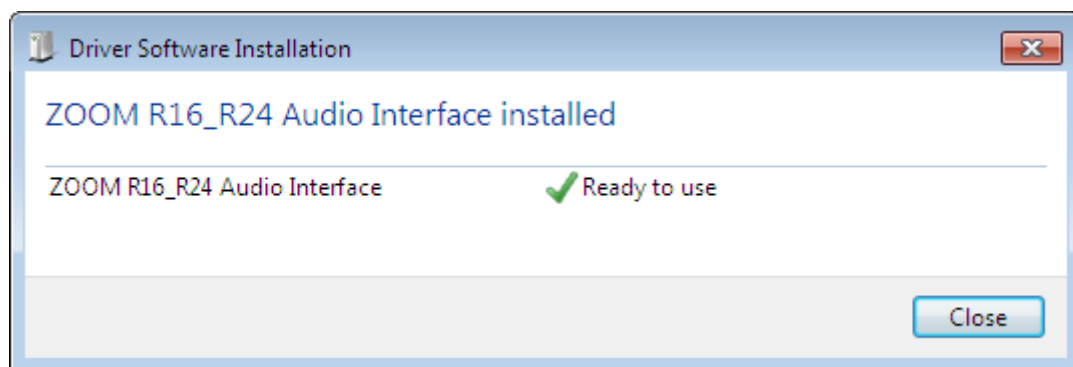
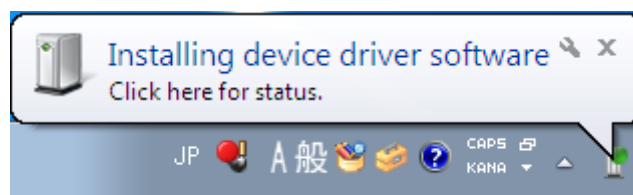
8. Click [Finish] to finish installation of InstallShield.



9. Next, connect the R16 or R24 to the computer using a USB cable.

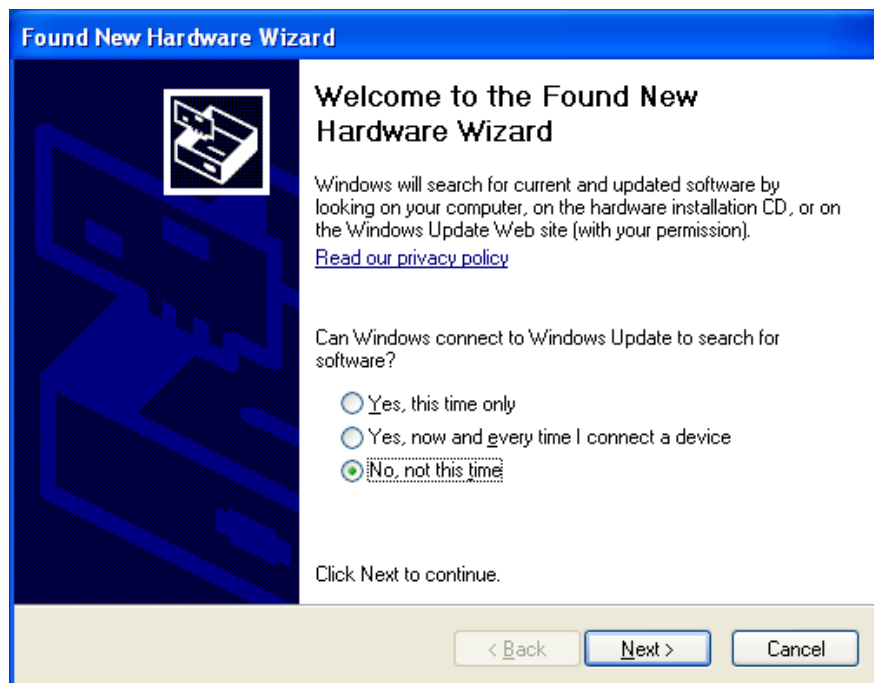
*For the information on connecting the R16 or R24 to a computer, see the section "Audio interface/control surface" of operation manual.

When R16 or R24 is connected to Computer, "Installing device driver software" will launch and it finish automatically.

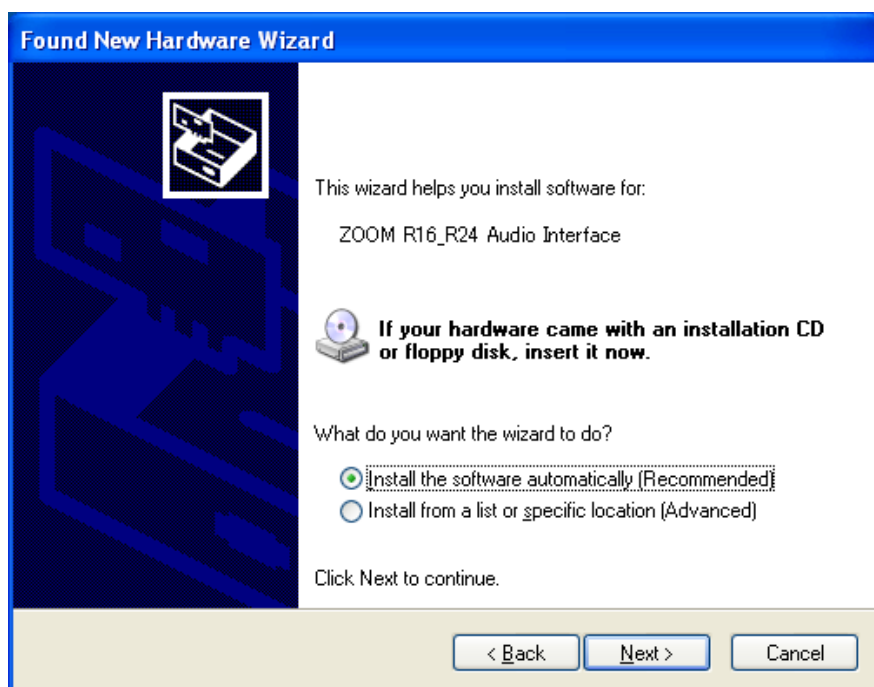


Or, when R16 or R24 is connected to Computer, "Found New Hardware Wizard" will launch.

10. Select [No, not this time] of Windows Update and click [Next].



11. Select [Install the software automatically] and click [Next] to start installation.



When a warning message “Hardware Installation” appears, click [Continue Anyway].



12. Click [Finish] to complete installation.

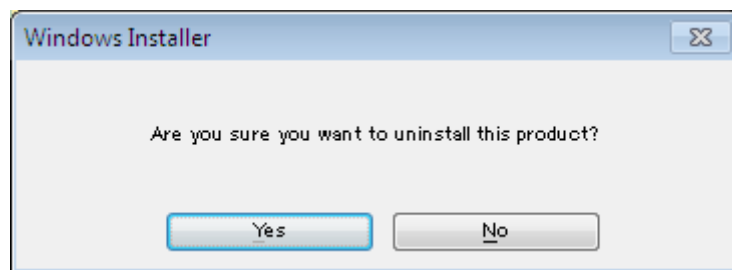


Uninstallation

1. Start Windows without any USB devices including R16 or R24 (Except keyboard and mouse).
2. Shut down any applications that are running.
3. Click on the Start→Programs→ZOOM→R16_R24 Driver→" Uninstall R16_R24 Driver " icon.



4. The uninstallation process starts. Confirm that you want to proceed by clicking [YES]. To cancel the process, click [NO].



*The uninstallation is completed automatically.