

# **ZOOM R8 Driver Installation Guide (Windows)**

Copyright(C) 2013 ZOOM Corporation. All Rights Reserved.

Ver2.0.0

● **Zoom Corporation does not bear liability for any damages or third-party claims arising from the use of the software, whether directly or indirectly. Unauthorized redistribution, sale, leasing, renting, alteration, or reverse engineering of the software is prohibited. Features and specifications of the software and the contents of the documentation may be changed in future without notice.**

The actual content of screens and messages on the computer may differ from the illustrations used in this manual.

## <Contents>

Introduction.....	3
Operation Environment Requirements .....	3
Precautions .....	3
Updating the driver .....	4
Installation .....	5
Uninstallation .....	11

## Introduction

Thank you for downloading the ZOOM R8 Driver.

This document describes how to install and uninstall the driver.

## Operation Environment Requirements

**Operating system:** Windows® XP SP3 later(32bit) / Windows® Vista SP1 later(32bit / 64bit) /  
Windows® 7 (32bit / 64bit) / Windows® 8 (32bit / 64bit)

**CPU:** 32bit: Intel®Pentium®4 1.8GHz more  
64bit: Intel® Pentium®Dual-Core 2.7GHz more

**MEMORY:** 32bit: RAM 1GB more  
64bit: RAM 2GB more

### Precautions

- 1) Start installation and uninstallation disconnecting R8 from PC.
- 2) Before starting this application, shut down all other applications that are running.

## Updating the driver

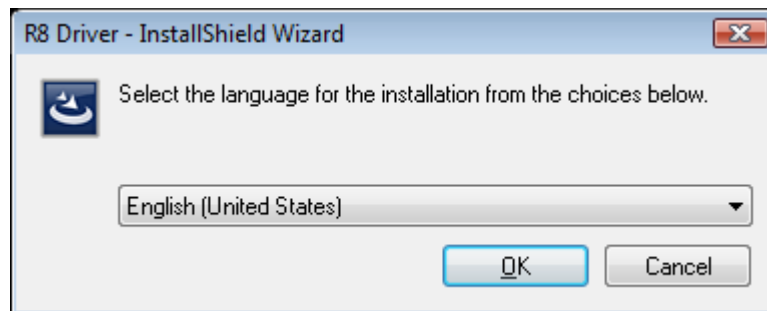
If a ZOOM R8 Driver is already installed, first uninstall the old driver.  
Then install the new driver.

## Installation

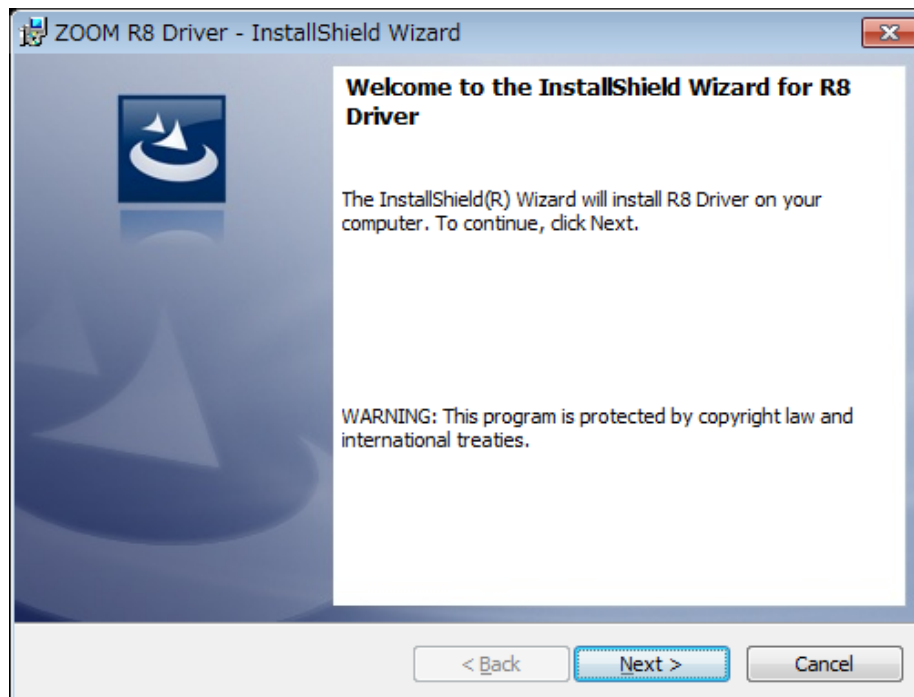
1. Start Windows without any USB devices including R8 (Except keyboard and mouse).
2. Shut down any applications that are running.
3. Double-click on the "setup.exe" icon.



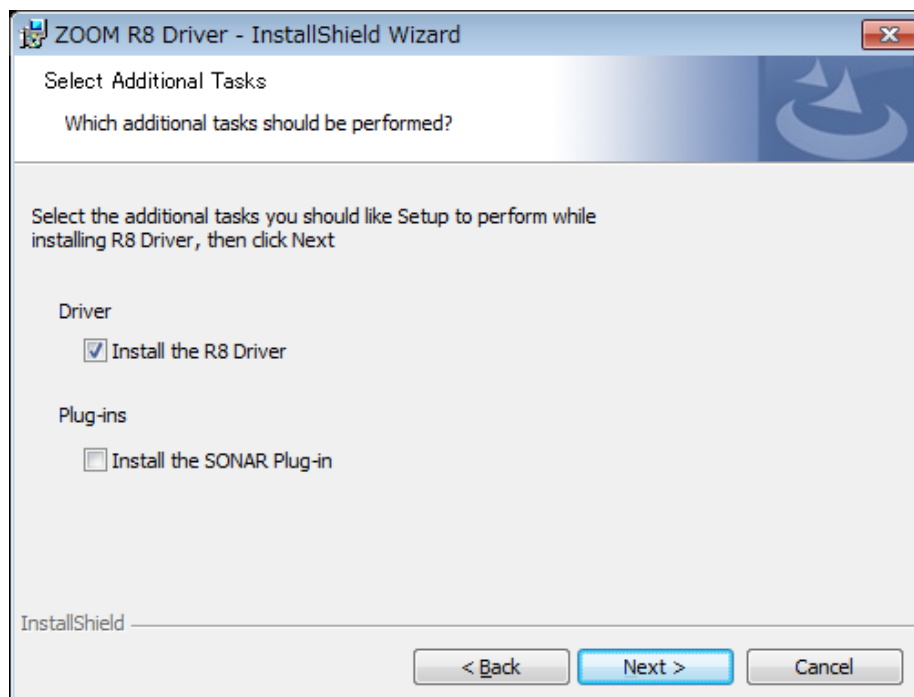
4. Select language and click [OK].



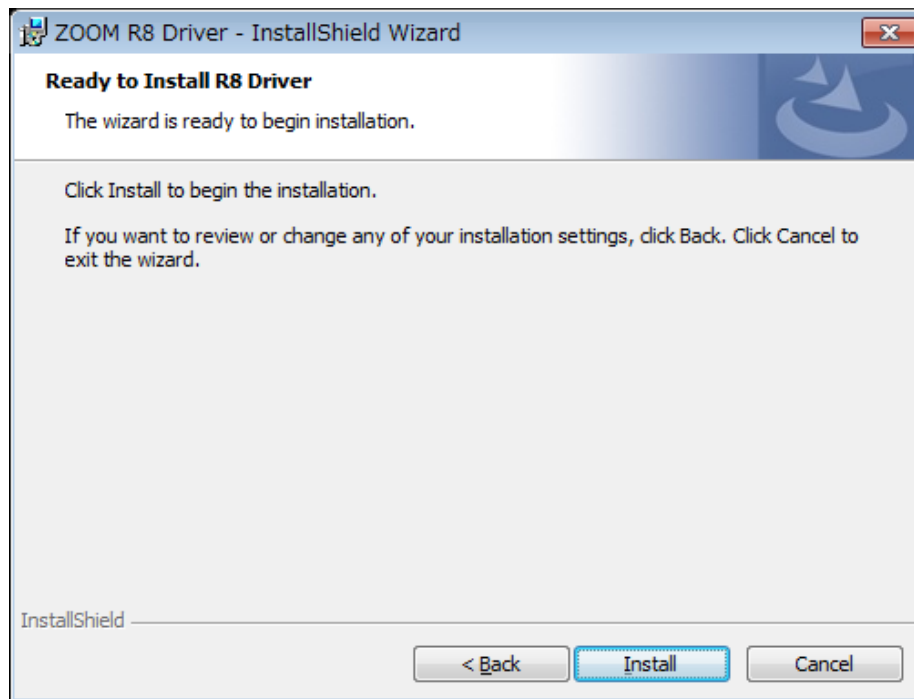
5. To start the installation, click [Next].



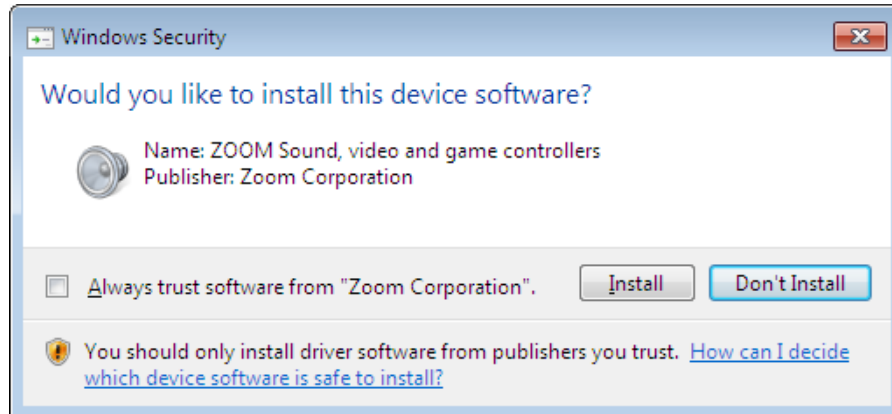
6. When you use SONAR, select "Install the SONAR Plug-In".



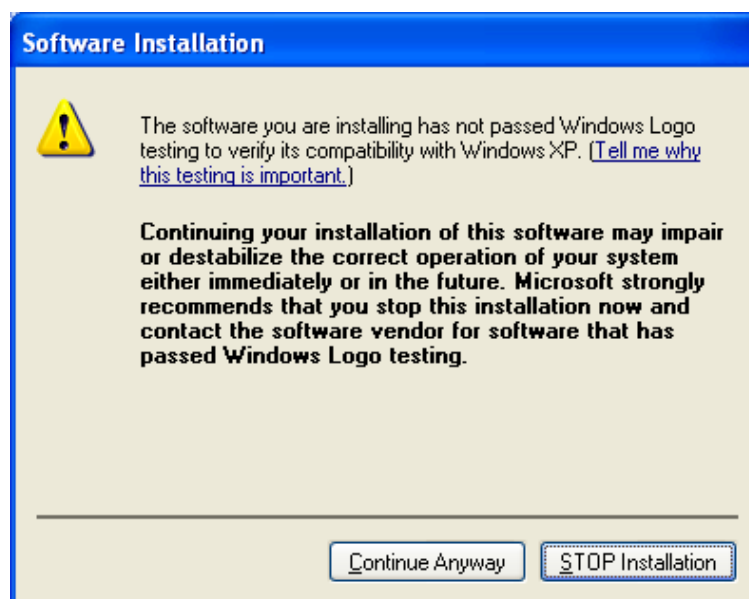
7. To start the installation, click [Install].



When a warning message “Windows security” appears, click [Install].



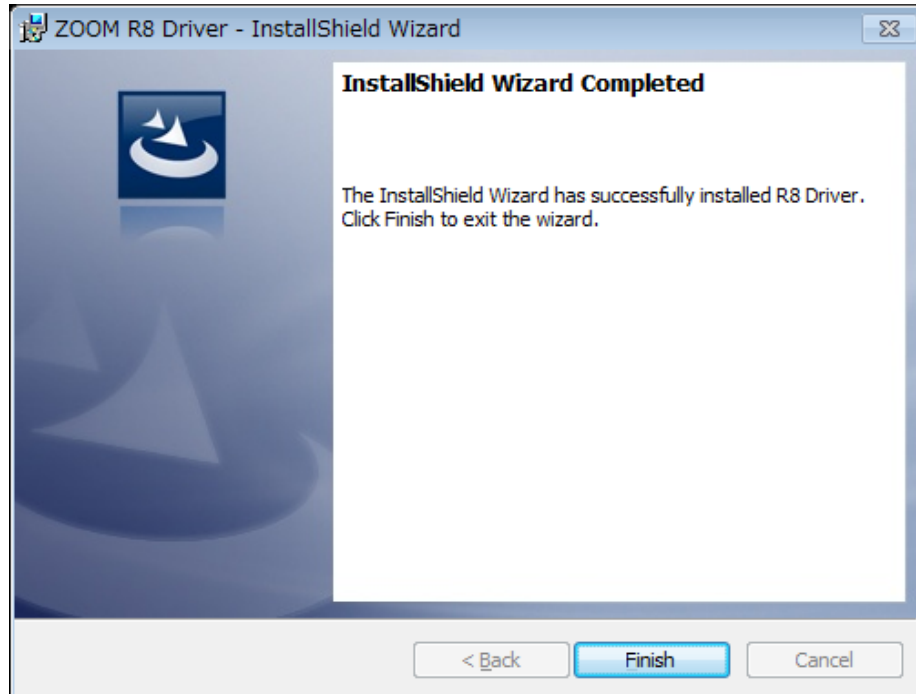
When a warning message “Software Installation” appears, click [Continue Anyway].



\*A message “ZOOM R8 Audio Driver (No Response)” may appear, but it is not a problem. Wait until it responds.



8. Click [Finish] to finish installation of InstallShield.

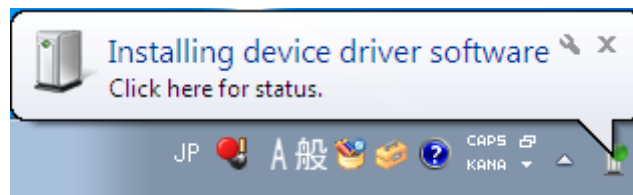


9. Next, connect the R8 to the computer using a USB cable.

\*For the information on connecting the R8 to a computer, see the section "Audio interface/control surface" of operation manual.

- **Windows 7/Vista**

When R8 is connected to Computer, "Installing device driver software" will launch and it finish automatically.



- **Windows XP**

When you connect the R8 to a computer, a "Found NewHardware ZOOM R8 Audio Interface" message appears.

If an "Install hardware" warning dialogue appears, click "Continue".



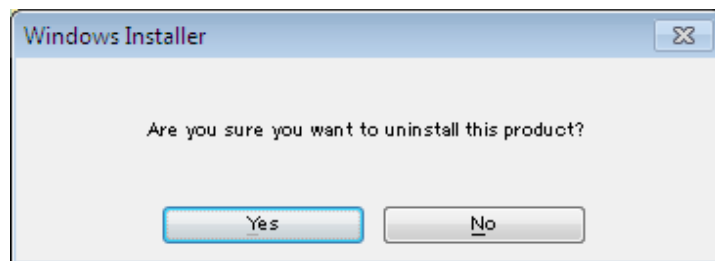
Wait until "The device was able to be prepared" message is displayed.

## Uninstallation

1. Start Windows without any USB devices including R8 (Except keyboard and mouse).
2. Shut down any applications that are running.
3. Click on the Start→Programs→ZOOM→R8 Driver→" Uninstall R8 Driver " icon.



4. The uninstallation process starts. Confirm that you want to proceed by clicking [YES]. To cancel the process, click [NO].



\*The uninstallation is completed automatically.