

# ZOOM U-22 Driver Installation Guide (Windows)

Copyright(C) 2016 ZOOM Corporation. All Rights Reserved.

●Zoom Corporation does not bear liability for any damages or third-party claims arising from the use of the software, whether directly or indirectly. Unauthorized redistribution, sale, leasing, renting, alteration, or reverse engineering of the software is prohibited. Features and specifications of the software and the contents of the documentation may be changed in future without notice.

Windows® is a registered trademark of Microsoft® Corporation.  
Note: All trademarks and registered trademarks in this document are for identification purposes only and are not intended to infringe on the copyrights of their respective owners.

The illustrations in these instructions might differ from actual screens.

## Contents

1. Introduction .....	2
2. System Requirements .....	2
Precautions .....	2
3. Updating the driver .....	2
4. Installation.....	3
5. Uninstallation.....	5
6. Setting the driver.....	5

## 1. Introduction

Thank you very much for downloading the ZOOM U-22 Driver for the U-22.

This document explains how to install and uninstall the ZOOM U-22 Driver.

## 2. System Requirements

OS :	Windows® 7 SP1 or later (32-bit/64-bit) Windows® 8.1 (32-bit/64-bit) Windows® 10 (32-bit/64-bit)
CPU:	Intel Core i3 or faster (Operation is not guaranteed with CPUs from Atom, Celeron or Pentium series or CPUs made by AMD)
USB:	USB 3.0/USB 2.0 port (Only USB host controllers with Intel Chipsets are supported. Operation is not guaranteed when used with USB hubs or expansion cards.)

### **Precautions**

- 1) Start installation and uninstallation disconnecting U-22 from PC.**
- 2) Before starting this application, shut down all other applications that are running.**

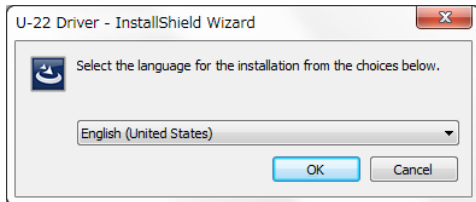
## 3. Updating the driver

If a ZOOM U-22 Driver is already installed, first uninstall the old driver.

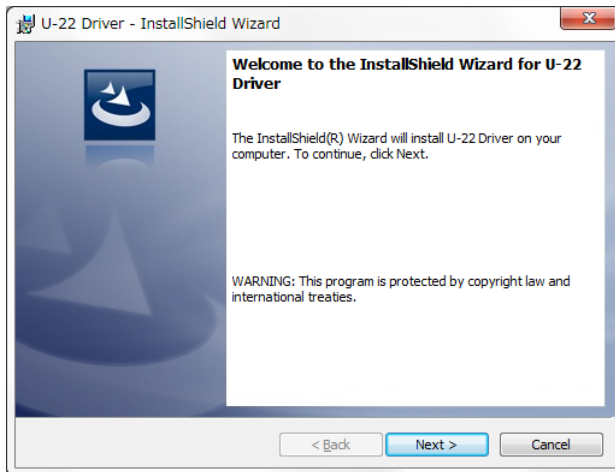
Then install the new driver.

## 4. Installation

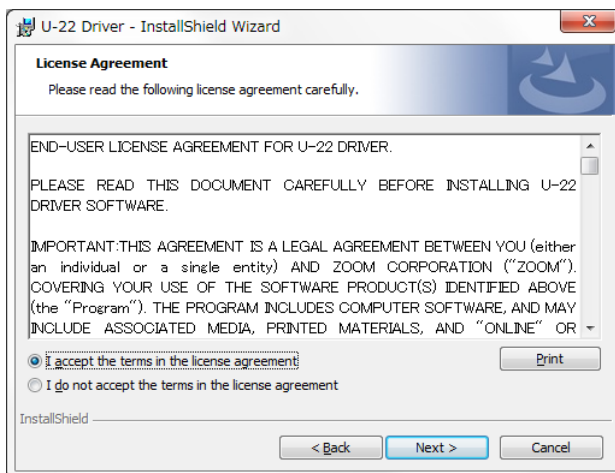
1. Double-click on “ZOOM U-22 32.exe” or “ZOOM U-22 64.exe” depending on the operating system you use.
2. Select the language and click [OK].



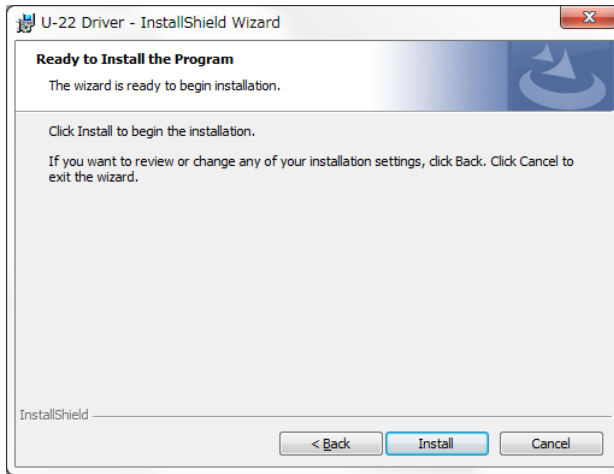
3. To start the installation, click [Next].



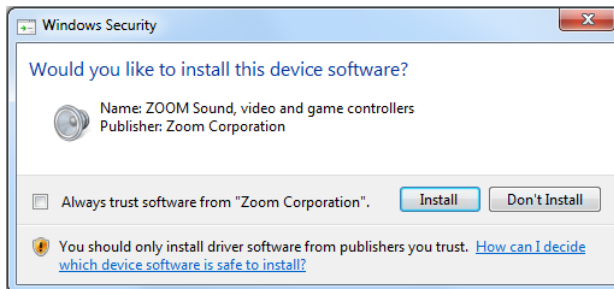
4. The License Agreement is displayed. Read the agreement and place a check mark in the “I accept the terms in the License Agreement” box to confirm your acceptance of the agreement. Then click [Next].



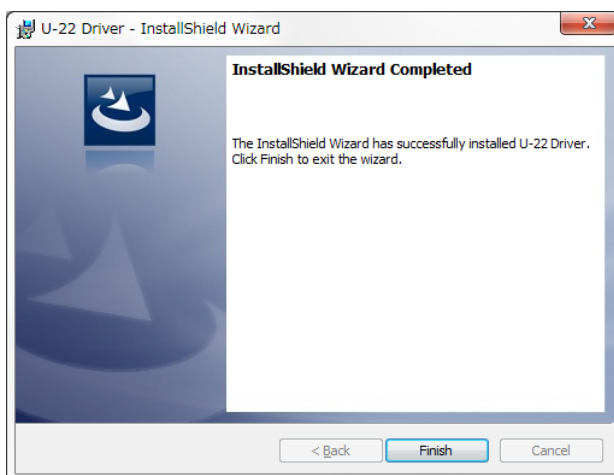
5. To start the installation, click [Install].



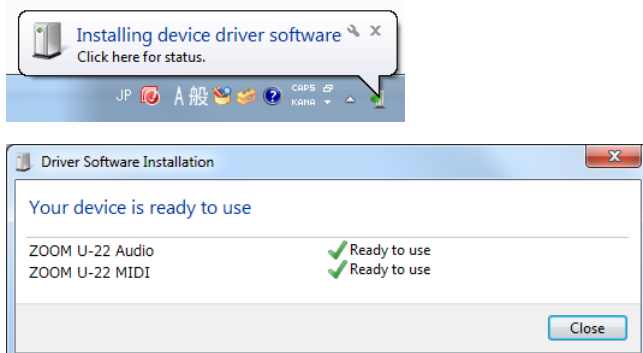
When a “Windows security” warning message appears, click [Install].



6. Click [Finish] to finish installation of InstallShield.

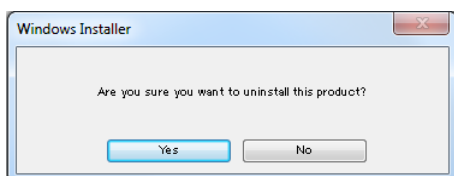


7. Connect the U-22 and the computer using a USB cable. Then, turn the U-22 power on. When the U-22 is connected to the computer, "Installing device driver software" will launch and installation will complete automatically.



## 5. Uninstallation

1. Click [Start] → [All Programs] → [ZOOM] → [U-22 Driver] → "Uninstall U-22 Driver".
2. The uninstallation process starts. Confirm that you want to proceed by clicking [Yes]. The uninstallation will complete automatically.



## 6. Setting the driver

Open the Control Panel on your computer. Select "Hardware and Sound" and change settings on the ZOOM U-22 Control Panel.