

## **G1on/G1Xon/B1on/B1Xon**

### **v1.21 Firmware Update Guide For Windows**

Copyright(C) 2014 ZOOM Corporation. All Rights Reserved.

● Zoom Corporation will bear no responsibility for losses or claims from third parties that result from the use of this software. Moreover, without our permission, distributing, selling, leasing, renting, altering or reverse engineering of this software is prohibited. Furthermore, the specifications of this software and the contents of this document could be changed without notice in the future.

Microsoft, Windows and Windows Vista are trademarks or registered trademarks of Microsoft Corporation (USA) in the United States and other countries. Other product names, registered trademarks and company names that appear in this document are properties of their respective owners.

Note: All trademarks and registered trademarks in this document are used only for identification. There is no intention to infringe on the copyrights of their owners.

The explanatory illustrations in this manual might differ in appearance from the actual screens on the unit.

#### **1. Supported operating systems**

Windows XP SP3 or later (32bit)

Windows Vista SP2 or later (32bit, 64bit)

Windows 7 SP1 or later (32bit, 64bit)

Windows 8.1 or later(32bit, 64bit)

#### **Important preparations**

**1) Log in to your computer using an account with administrator privileges.**

2) Before launching this application, quit all other running applications.

## 2. Introduction

Thank you very much for downloading the firmware update application for the G1on, G1Xon, B1on and B1Xon.

This document uses the G1Xon for examples to explain how to update the firmware for the G1on, G1Xon, B1on and B1Xon.

## 3. Checking the firmware versions

Follow these procedures to check the firmware version.

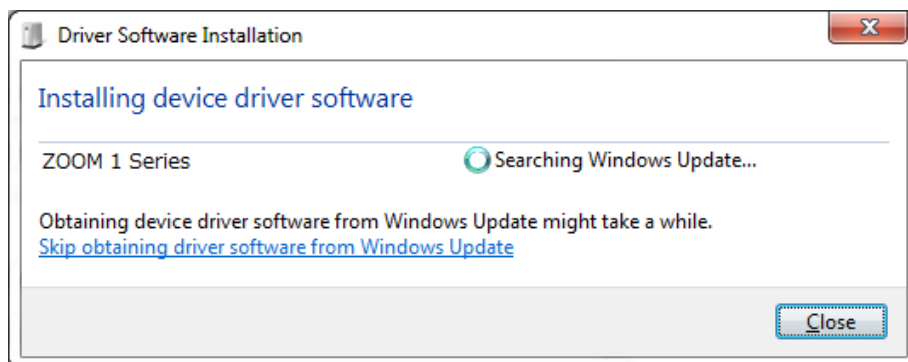
1. Start the G1Xon.
2. Press the MENU key to open the menu screen.
3. Move the cursor to VERSION and press ENTER key.

If the SYSTEM version is v1.21 or higher, you do not need to use this application to update the firmware. If the system version is lower than v1.21, follow the procedures below to update the firmware.

## 4. Installing the standard Windows driver on the computer

Connect the MS-50G to the computer using a USB cable.

After Windows detects the connection, a screen like the following will appear and the standard driver will be installed automatically.



Note: If the standard driver has already been installed, this screen will not appear.

## 5. Updating the firmware

Before updating the firmware, if any MIDI or audio devices are connected by USB cable to the computer you are using, disconnect them all. In addition, if any applications are running, quit them all.

- 5.1. When the G1Xon power is OFF, while pressing and holding both the up and down cursor keys, connect its USB port and the computer with a USB cable.

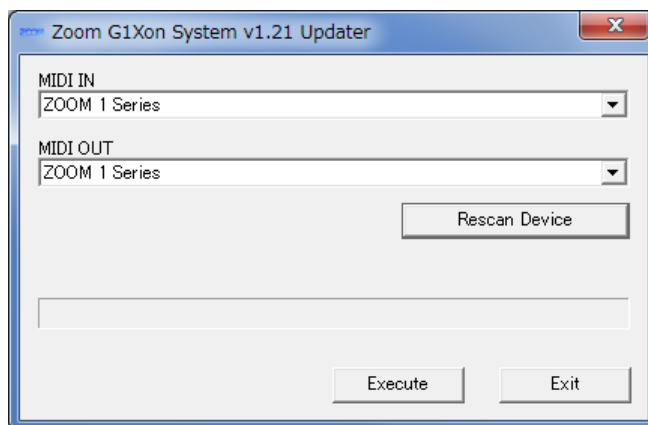
This operation puts the G1Xon into a state ready to receive a firmware update, and its display shows a firmware update standby screen.

### NOTE

The firmware update requires the standard driver. Follow the instructions of the wizard to complete its installation. (See “Installing the standard Windows driver on the computer” on page 2.)

- 5.2. Double-click the firmware update application icon to launch it.

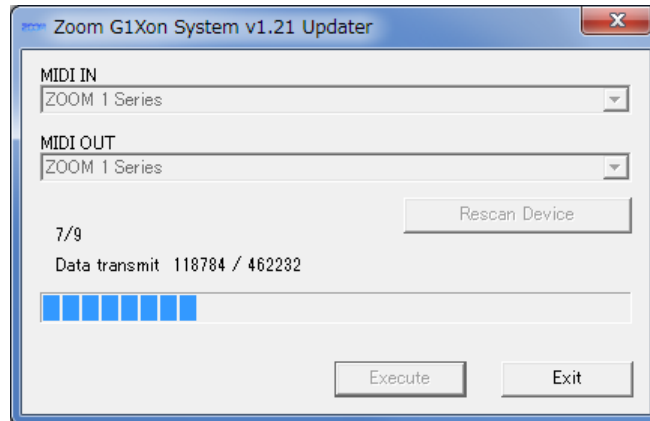
After launching, a window that looks like this appears.



- 5.3. Confirm that “ZOOM 1 Series” appears in both the “MIDI IN” and “MIDI OUT” fields. If it does not, click the field to open a list of MIDI devices and select “ZOOM 1 Series.”

NOTE: If you are using Windows XP, "USB Audio Device" will appear in both the “MIDI IN” and “MIDI OUT” fields.

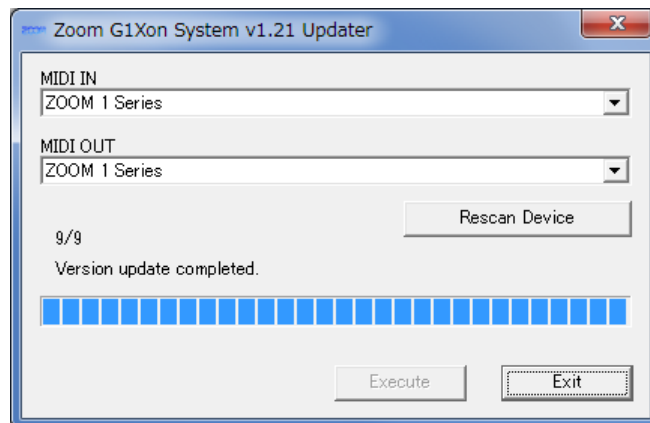
- 5.4. Click the **Execute** button to start the firmware update. The progress of the firmware update appears as a bar like this.



Do not disconnect the USB cable while the firmware is being updated.

In the unlikely event that a firmware update should fail, follow the procedures from step 5.1 to update the firmware again.

- 5.5. When the firmware update completes, it will appear as follows and "Complete" will appear on the display of the G1Xon.



Click the Exit button to close the firmware update application. Then, disconnect the USB cable and turn the G1Xon power off.

Turn the G1Xon power on again, and confirm that the firmware versions are as follows.

BOOT: v1.00  
PRESET: v1.00  
SYSTEM: v1.21

This completes the firmware update.

Z2I-2124-02