



G3n/G3Xn/B3n Firmware Update Guide (Windows)

Copyright(C) 2018 ZOOM Corporation. All Rights Reserved.

● Zoom Corporation does not bear liability for any damages or third-party claims arising from the use of the software, whether directly or indirectly. Unauthorized redistribution, sale, leasing, renting, alteration, or reverse engineering of the software is prohibited. Features and specifications of the software and the contents of the documentation may be changed in future without notice.

• Windows® is a registered trademark of Microsoft ® Corporation.
Note: Other Product names, registered trademarks and company names in this document are the property of their respective companies.
Note: All trademarks and registered trademarks in this document are for identification purposes only and are not intended to infringe on the copyrights of their respective owners.

The illustrations in these instructions might differ from actual screens.

Contents

1. Introduction	2
2. Installing the standard Windows driver on the computer.....	2
Precautions	2
3. Updating the firmware	3

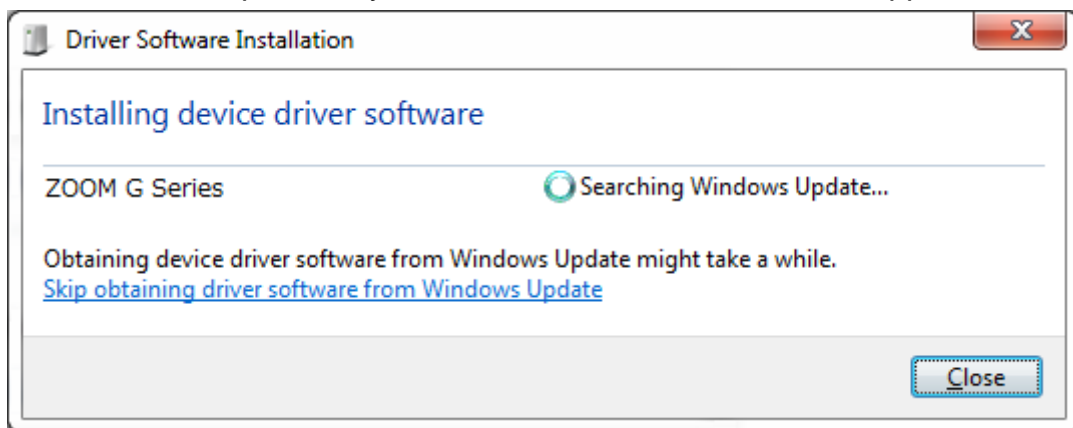
1. Introduction

Thank you very much for downloading the firmware update application for the G3n/G3Xn/B3n.

This document uses the G3n for examples to explain how to update the firmware for the G3n, G3Xn and B3n.

2. Installing the standard Windows driver on the computer

Connect the G3n to the computer using a USB cable. If you connect to a USB port that is different from the one that you used when installing the Windows standard driver previously, "Driver Software Installation" will appear.



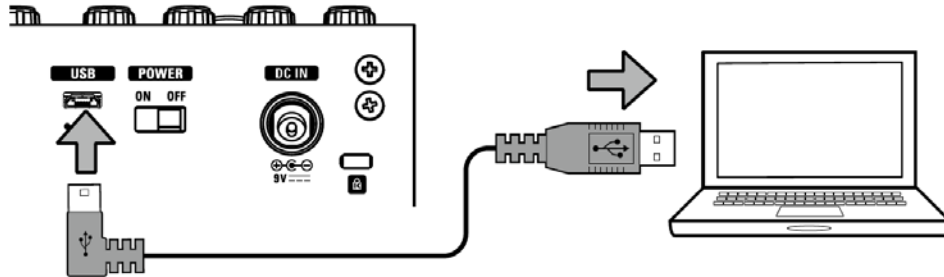
After a short time, the standard driver installation will complete.

Precautions

- 1) Log in to your computer using an account with administrator privileges.
- 2) Before starting this application, shut down all other applications that are running. In addition, if any MIDI or audio devices are connected by USB cable to the computer you are using, disconnect them all.

3. Updating the firmware

3.1 Use a USB cable to connect the G3n to a computer.

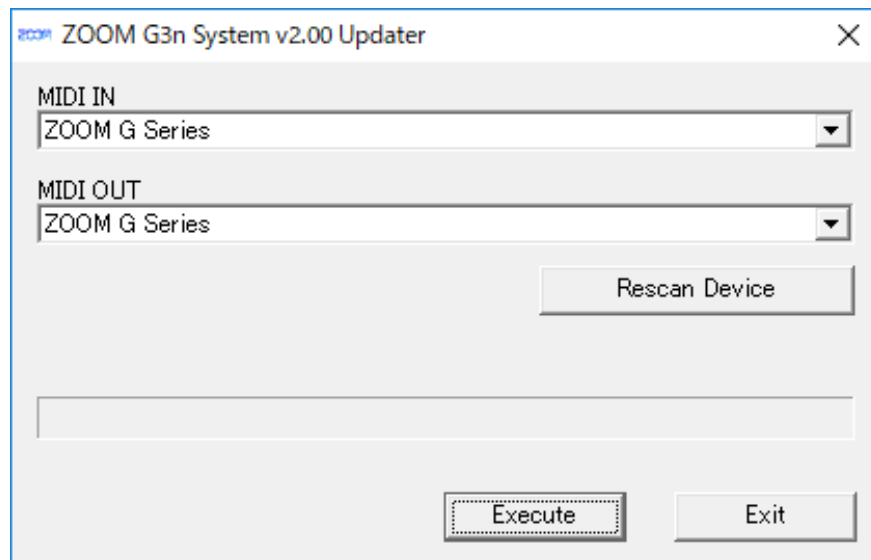


3.2 While pressing both  and , turn the POWER switch ON.

NOTE

The firmware update requires the standard driver. Follow the instructions of the wizard to complete its installation. (See “Installing the standard Windows driver on the computer” on page 2.)

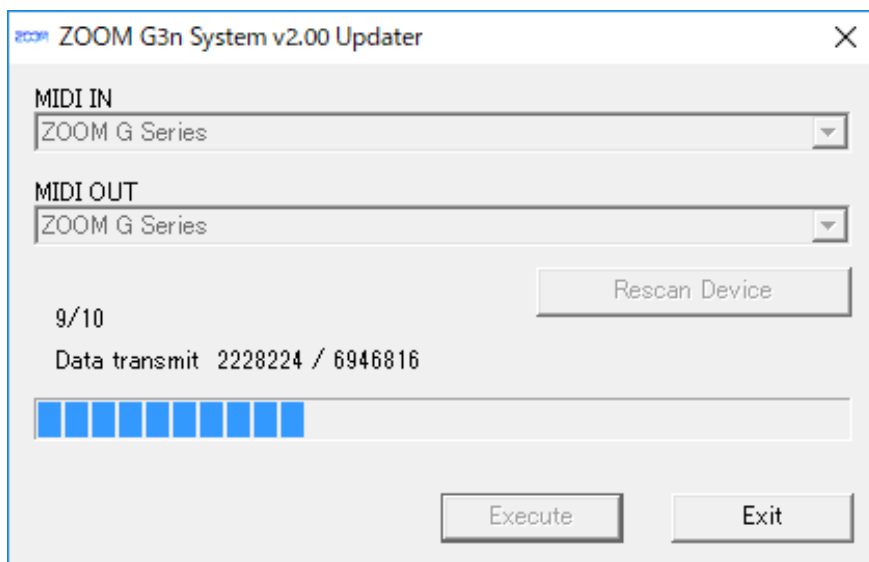
3.3 Double-click the firmware update application icon to launch.



3.4 With a G3n, click the “MIDI IN” and “MIDI OUT” fields to open lists of MIDI devices and select “ZOOM G Series” for both.

If nothing is shown in the fields, click [Rescan Device] button.

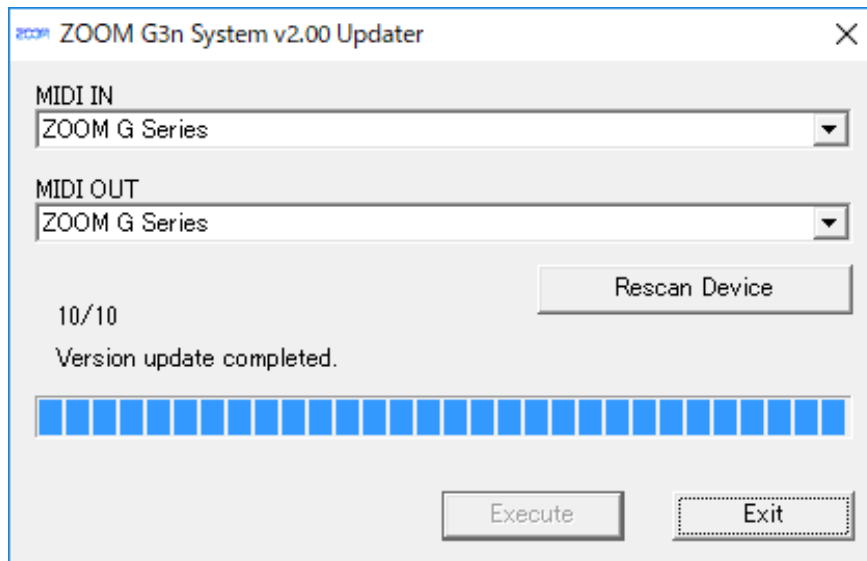
3.5 Click the [Execute] button to start the firmware update. The progress of the firmware update appears as a bar like this.



Do not disconnect the USB cable while the firmware is being updated.

In the unlikely event that a firmware update should fail, follow the procedures from step 3.1 to update the firmware again.

3.6 When the firmware update completes, it will appear as follows.



Click the [Exit] button to close the firmware update application. Then, turn the G3n power off.

This completes the firmware update.